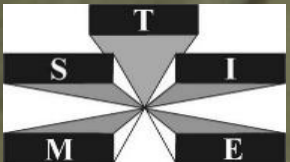




French crisis management system

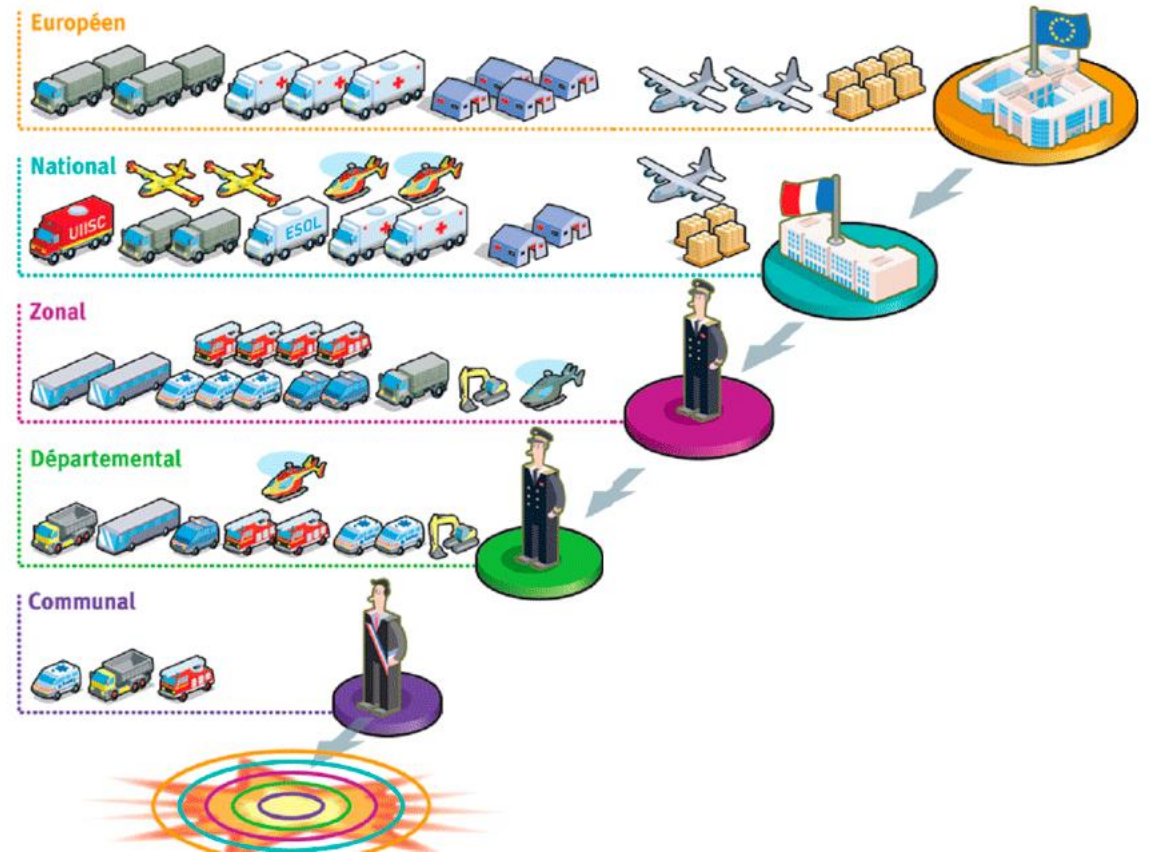


JP Monet @ Kyle KING / TIEMS Webinar 24th May 2021



Structural aspects

- European support
- National Headquarters
- Zonal subsidiaries
- Departmental organisation
- Municipality

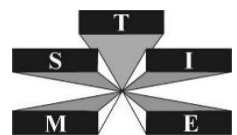


Structural aspects



National

- National crisis room (CIC)
- Civil protection headquarters (COGIC)
- Others crisis rooms

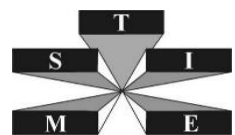


Structural aspects



Zonal

- 9 zonal headquarters
- Implementation and management of national resources
- Preparedness

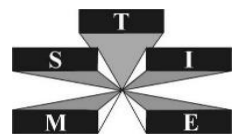


Structural aspects



Departmental

- Prefect : state representative
- COD : departmental crisis room
- CODIS : fire department headquarters

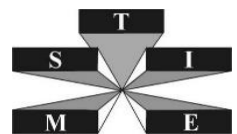


Operational aspects



Day to day business

- Fire departments
- Command and control system (C2S) : GOC
- Incident commander (CO)

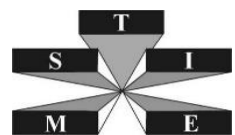
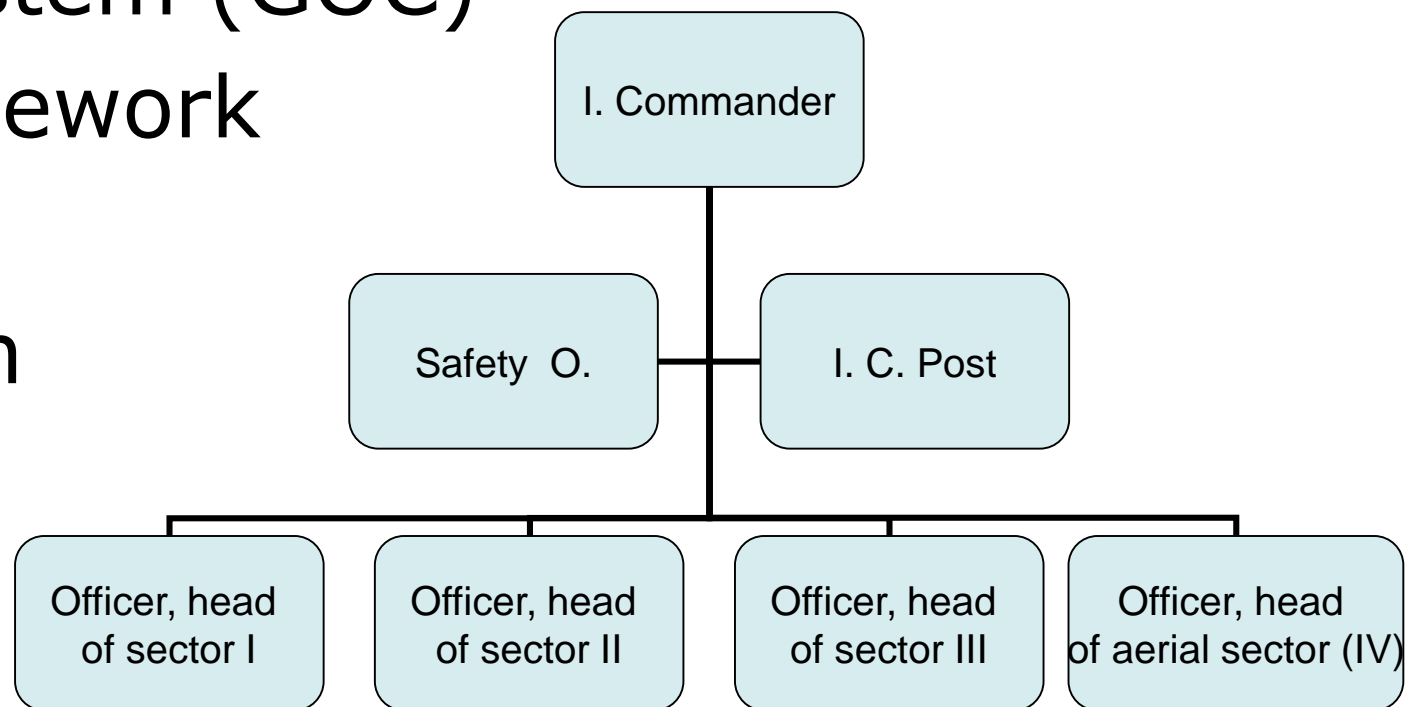


Operational aspects



Command system

- French command system (GOC)
- Unique national framework
- Span of command
- 5 levels of instruction

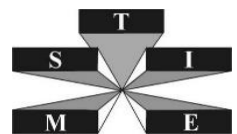


Operational aspect



Interagency context

- Mayor and prefect : LEMA (local emergency management authority)
- Departmental crisis room activation
- On site field command po

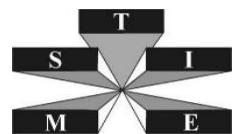


Operational aspect



Top national

- CIC (Crisis national room) activation
- Prime minister is LEMA (local emergency management authority)
- Particular involvement of home minister



Study cases



Wildfire

- Departmental first response
- Zonal commitment
- National report and arbitration



Study cases



Cross border : train accident

- Bilateral agreements (160)
- Dual involvement
- Dual reporting
- Interoperability



Conclusion



- Very national centric system
- C2S harmonised at national level
- Unicity of command and core principle on the whole territory

